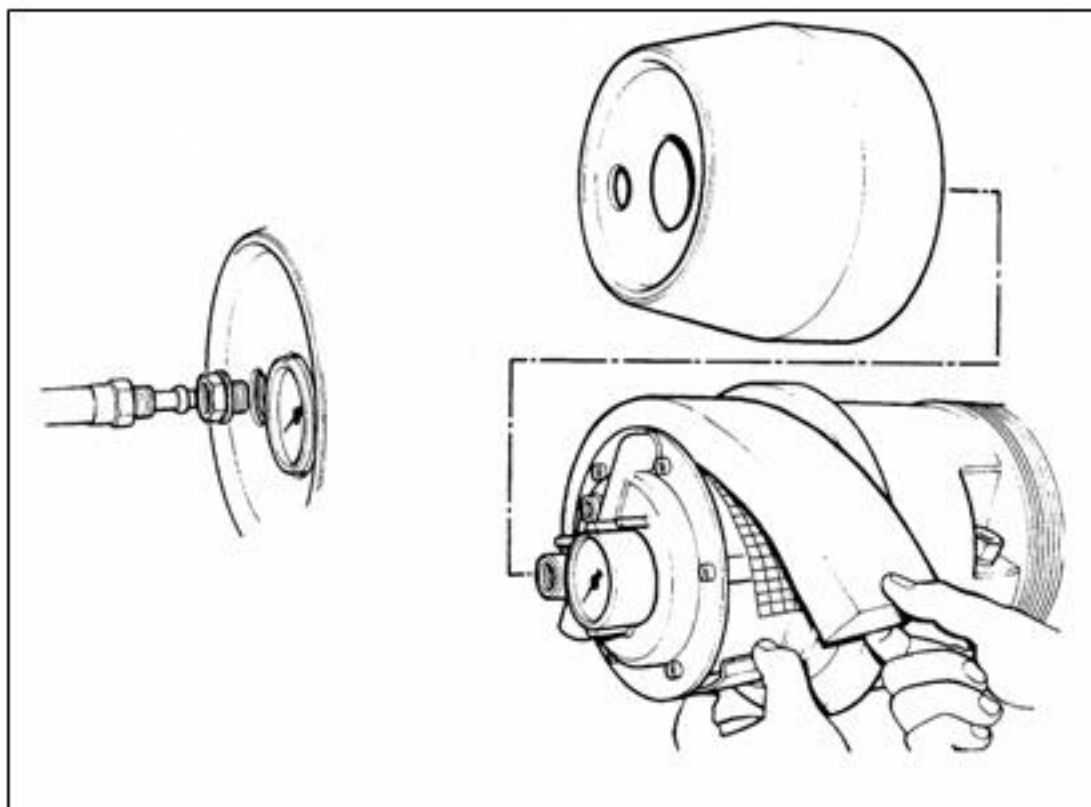


USF EBE



Maintenance EBE product line.

Art. Number: DA - - 4151 Pressure gauge

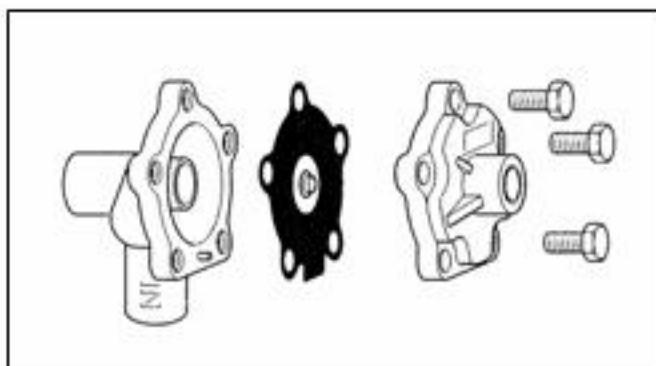


Art. Number: DA - - 2137 Intake filter element



Art. Number: DA - - 4151
Pressure gauge

Art. Number: DA - - 2137
Intake filter element

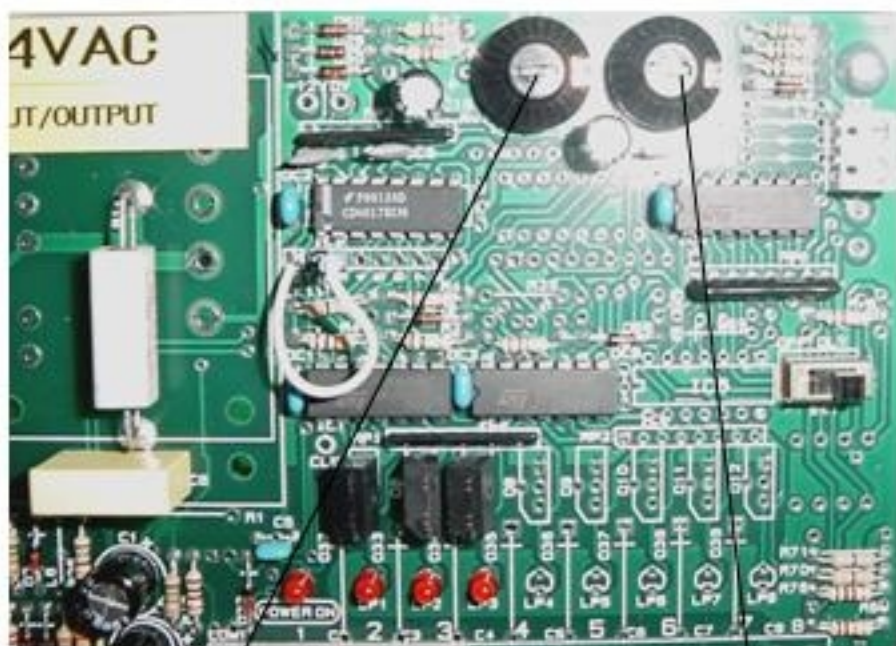


Art. Number: AIR-4165
Diaphragm Valve

Inside

Art. Number : AIR-4166
Diaphragm Valve Repair kit

PCB controller 24/24 AIR-2146



Interval time 6-7 sec.

**Arrow to the left
horizontal**



Compressor temp. Protector.

333-3201

333-2302



New type mouthseal 350-1080-V



New elevator belt 350-2505-VH



**Elevator drive roll
350-9055-VH**



Elevator support roll
350-9056-VH

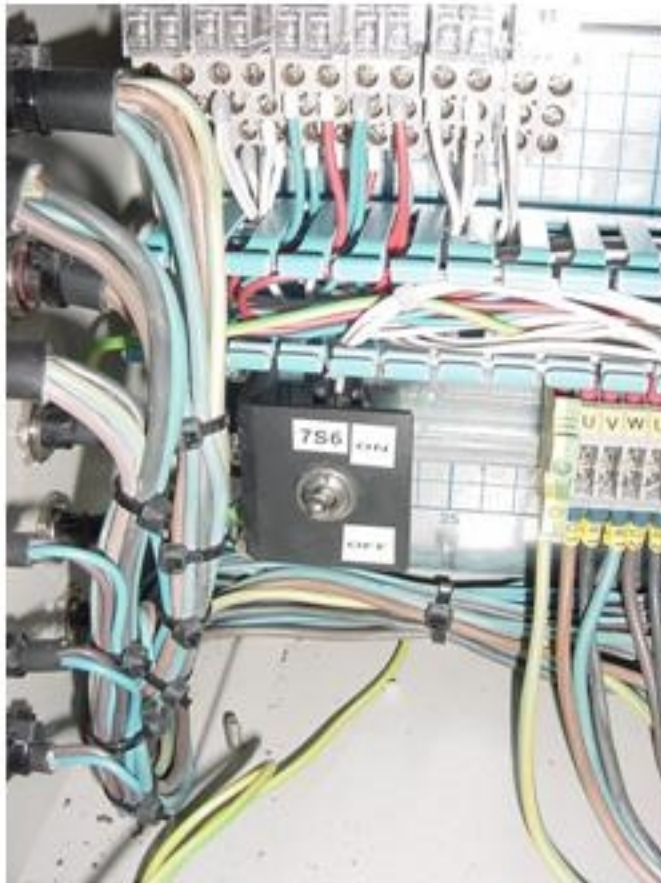


Groundfault protector E00367

Actuator settings 035-3191-VH



Distance 16 mm (350VH)
Distance 43 mm (500VH)



Actuator test switch 035-3191-VH

Abrasive actuator old-new



Wire on connector **7** has to go to
connector **5**

Wire on connector **2** has to go to
connector **4**

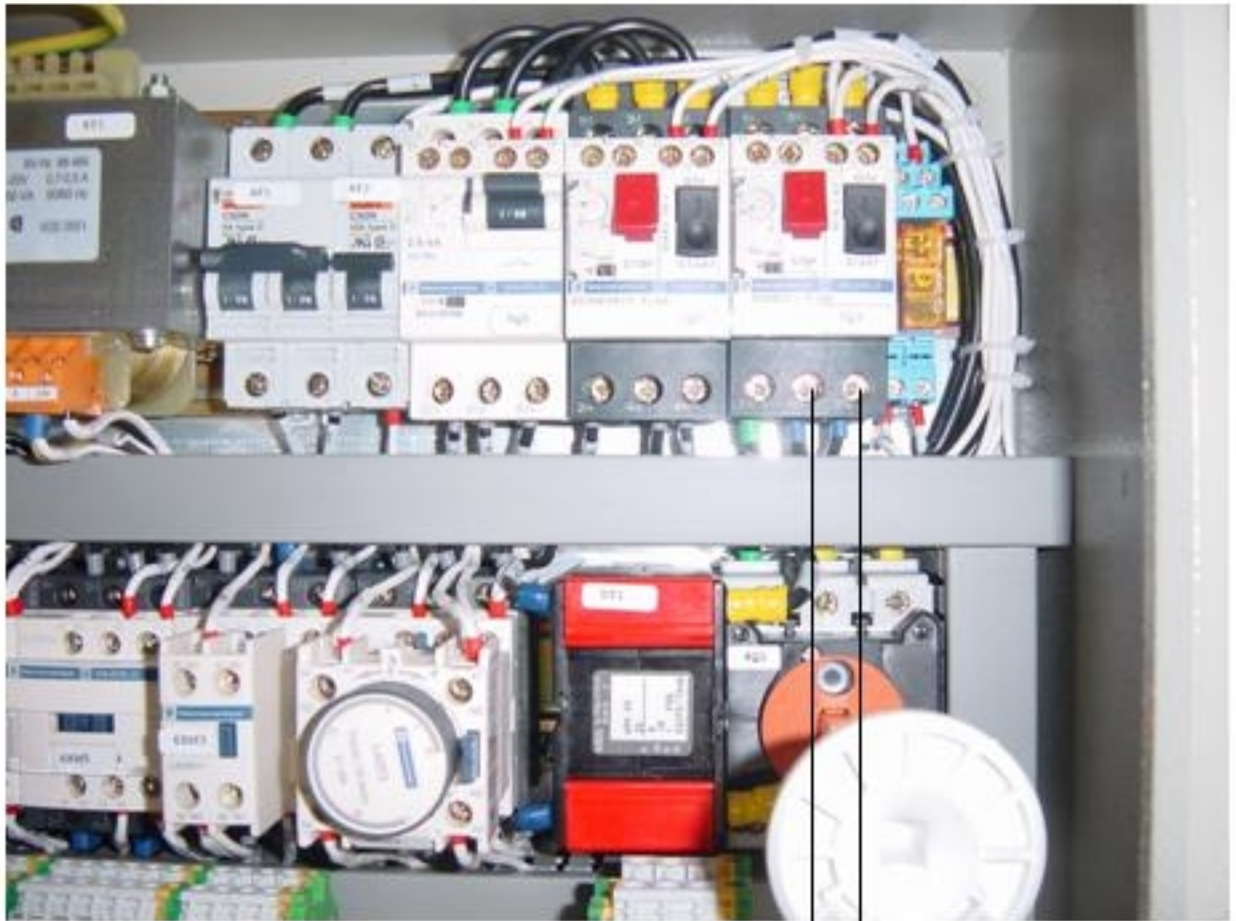
350 VH connector **NO K 9**

500 VH connector **NO K 17**

500 VH



CHANGING ROTATION OF BLAST MOTOR



Change these two wires to change the rotation of the blast motor

Connection drive motors new and old 350-500 drive system



UNI TRAFIO ALL PANELS



Approx. 65%

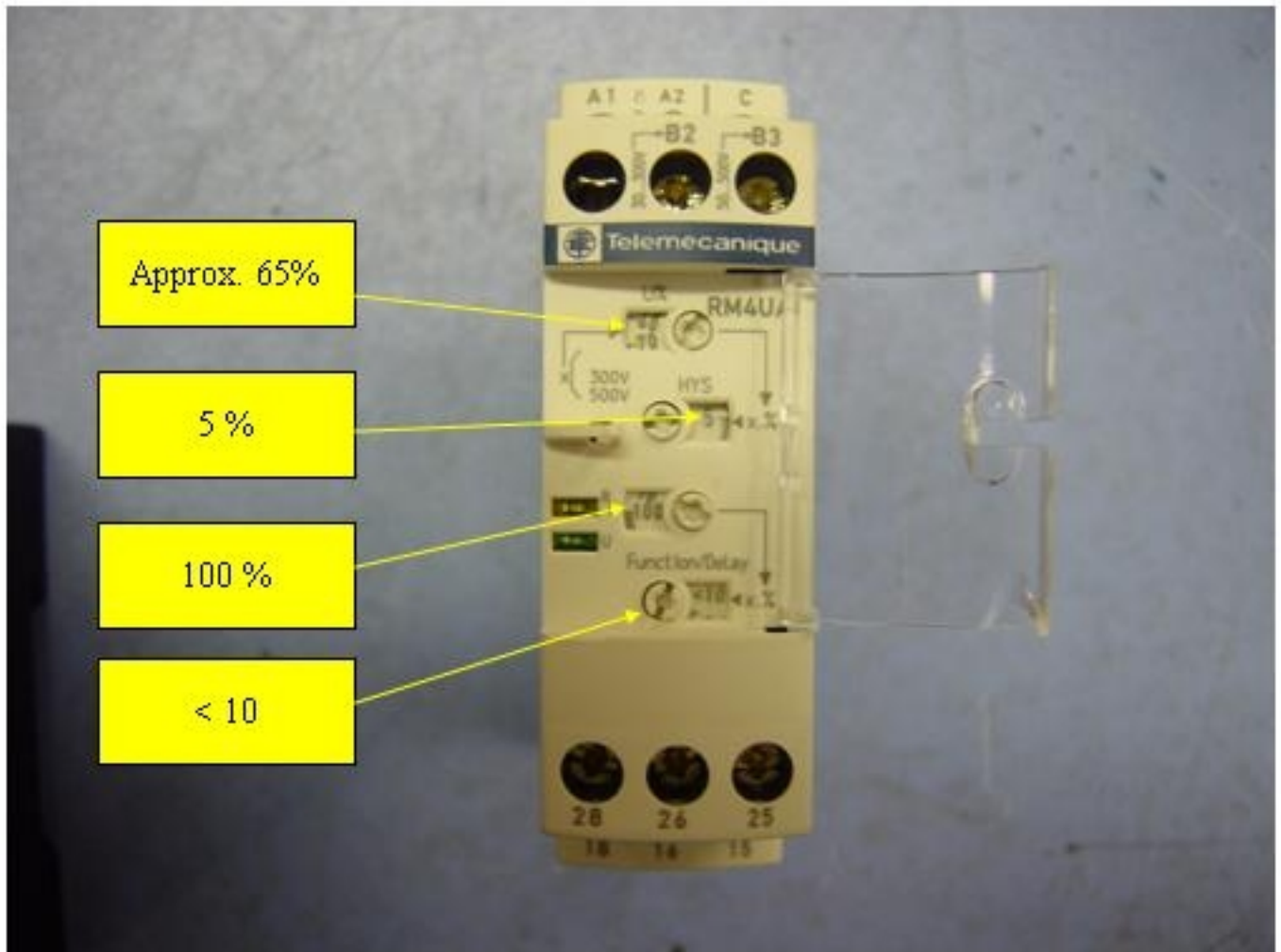
Outgoing control
Voltage 24 VAC

Incoming supply

- Example 500V: connect one wire to -20 V ; the other to 520 V
- Example 520V: connect one wire to 0 V ; the other to 520 V
- Example 480V: connect one wire to +20 V ; the other to 460 V

SETTING NEW VOLTAGE
RELAIS

333-3570



**According to electric schedules PJ 00.01028 and
PJ 00.01054**

OLD TYPE VOLTAGE
RELAIS 333-3570

U.V.



1 sec

3 sec

6 %

Set 360
UB 400

Set 400 > 440

Set 440 > 480

Voltage control 500-3570-EDA



SET - 30%

SET + 30%

SET 5 SEC

035-4101 Tracking control



Common Wear parts EBE 500 / 600 Serial 'horizontal machines'

Description	500 S	500 E	500 VH	500 UB	600 S
Front skirt intermed	●	●	○	○	○
Front skirt outer	●	●	○	○	○
Mouth seal	○	○	●	●	○
Innerseal left	○	○	●	●	○
Innerseal right	○	○	●	●	○
Innerseal top	○	○	●	●	○
Innerseal bottom	○	○	●	●	○
Body repair kit front	●	●	○	○	○
Body repair kit side (set)	●	●	○	○	○
Fan Housing	●	●	●	○	○
Fan Impellor	●	●	●	○	○
Rep. Plate fan housing	●	●	●	○	○
Actuator	○	○	●	●	○
Blast motor belt	○	○	○	○	○
Side seal spring	●	●	○	○	○
Side seal spring plate	●	●	○	○	○
Taperlock ad. Bl. Wheel	●	●	●	●	○
Taperlock bush 1610 35	●	●	●	●	○
○	= Not Available parts				
●	= Standard Available parts				

Common Wear parts EBE 500 / 600 Serial 'horizontal machines'

(Same part number)

Description	500 S	500 E	500 VH	500 UB	600 S
Bla stwheel	●	●	●	●	○
Bla stwheel protector ring	●	●	●	●	○
Bla stwheel protector plate	●	●	●	●	○
Bla stwheel mount plate	●	●	●	●	○
Blades (set of 6)	●	●	●	●	○
Impellor	●	●	●	●	○
Cage	●	●	●	●	●
Liner Left	●	●	○	○	●
Liner right	●	●	○	○	●
Top Liner	●	●	●	●	●
Feedspout rubber	●	●	○	○	○
Shotvalve insert	●	●	○	○	○
Shotvalve insert	○	○	●	●	●
Back brush	●	●	○	○	○
Side skirt (set 2)	●	●	○	○	○
Side brush (set of 2)	●	●	○	○	○
Side Seal (set of 2)	●	●	○	○	○
Front skirt Inner	●	●	○	○	○

Common Wear parts EBE 500 Serial 'horizontal /vertical machines'

Description	500 S	500 E	500 VH	500 UB
Front skirt intermed	●	●	○	○
Front skirt outer	●	●	○	○
Mouthseal	○	○	●	●
Innerseal left	○	○	●	●
Innerseal right	○	○	●	●
Innerseal top	○	○	●	●
Innerseal bottom	○	○	●	●
Body repair kit front	●	●	○	○
Body repair kit side (set)	●	●	○	○
Fan Housing	●	●	●	○
Fan Impellor	●	●	●	○
Rep. Plate fan housing	●	●	●	○
Actuator	○	○	●	●
Blast motor belt	○	○	○	○
Side seal spring	●	●	○	○
Side seal spring plate	●	●	○	○
Taperlock ad. Bl. Wheel	●	●	●	●
Taperlock bush 1610 35	●	●	●	●



= Not Available parts



= Standard Available parts

Common Wear parts E BE 500 Serial 'horizontal /vertical machines'
(Same part number)

Description	500 S	500 E	500 VH	500 UB
Blastwheel	●	●	●	●
Blastwheel protector ring	●	●	●	●
Blastwheel protector plate	●	●	●	●
Blades (set of 6)	●	●	●	●
Impellor	●	●	●	●
Cage	●	●	●	●
Liner Left	●	●	□	○
Liner right	●	●	□	○
Top Liner	●	●	●	●
Liner Left	□	○	●	●
Liner right	□	○	●	●
Feedspout rubber	●	●	□	○
Shotvalve insert	●	●	○	○
Shotvalve insert	○	○	●	●
Back brush	●	●	○	○
Side skirt (set 2)	●	●	○	○
Side brush (set of 2)	●	●	○	○
Side Seal (set of 2)	●	●	○	○
Front skirt Inner	●	●	○	○

EBE500 II / E MACHINE

Part Nr.	Description	0 - 20 h	20 - 80 h	80 - 200 h	200 - 400 h	400 - 800 h
500-1052-S E	Front skirt inner	●				
500-1053-S E	Front skirt inner med		●			
500-1054-S E	Front skirt outer		●			
500-1056-S E	Front skirt fixing plate set				●	
500-1057-S E	Front skirt fixing plate				●	
500-1058-S E	Front skirt locating plate inner				●	
500-1059-S E	Front skirt locating plate outer				●	
500-1100-S E	Body repair kit front			●		
500-1101-S E	Body repair kit side (set)			●		
500-1090-S E	Fan Housing				●	
500-1085-S E	Fan Impellor				●	
500-1095-S E	Rep. Plate fan housing			●		
500-1245-S EV	Impellor bolt				●	
222-2265	Tapelock ad. B. Wheel				●	
222-2295	Tapelock bush 16 15-42				●	
500-9006-S	Blast housing complete					●

● = Needs welding preparing

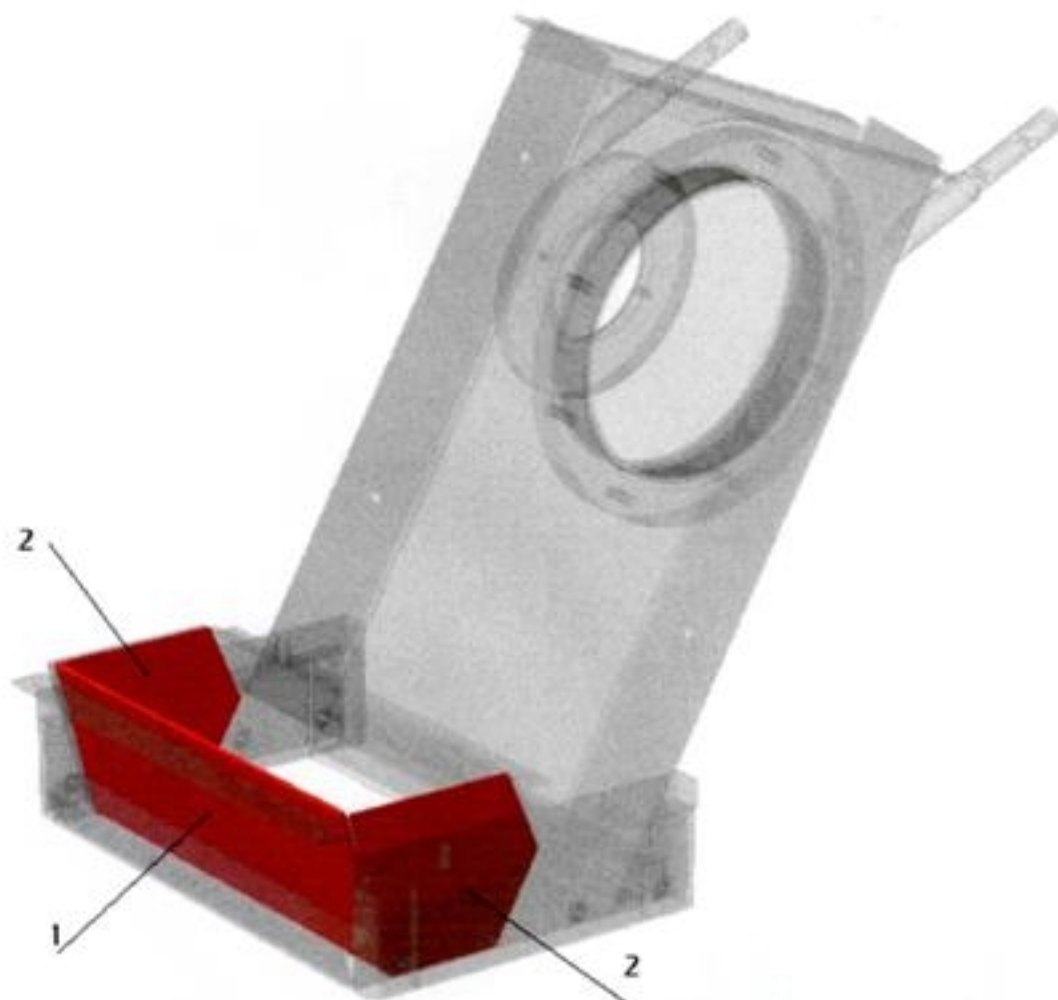
Note : Change Rotating of the Blastmotor after appr. 150 Hours.
(lifetime of wear parts will extend)

* Wear time indications are based by blasting normal steel surfaces with a epoxy coating of 400 Microns.

* The uses of steel shot and/or steel grit and hardness of rockwell can influence the life time of the wear parts.

EBE 500 S / E MACHINE						
Part Nr.	Description	0 - 20 h	20 - 80 h	80 - 200 h	200- 400 h	400- 800 h
500-1025-SE VH	Blastwheel					●
500-1106-SE	Blastwheel protector ring					●
500-1107-SE	Blastwheel protector plate					●
500-9007-SE VU	Blastwheel mount plate					●
500-1005	Blades (set of 6)		●			
500-1010	Impeller		●			
500-1015	Cage		●			
500-1030-SE	Liner Left				●	
500-1035-SE	Liner right				●	
500-1040	Top Liner				●	
500-1065-SE	Feedspout rubber			●		
500-1071-SE	Shot valve insert steel				●	
500-1070-SE	Shotvalve insert			●		
500-1045-SE	Back brush			●		
500-1060-SE	Side skirt (set 2)		●			
500-1050-SE	Side brush (set of 2)		●			
500-1020	Side Seal (set of 2)				●	
500-2035-SE	Side seal spring				●	
500-1021-SE	Side seal spring plate				●	

EBE 500 SE - Body Repair Plates



Pos.	Partnumber	Description	Qty
1	500-1100-SE	Body Repair Kit (front)	1
2	500-1101-SE	Body Repair Kit (side)	2

EBE500 II / E MACHINE

Part Nr.	Description	0 - 20 h	20 - 80 h	80 - 200 h	200 - 400 h	400 - 800 h
500-1052-S E	Front skirt inner	●				
500-1053-S E	Front skirt inner med		●			
500-1054-S E	Front skirt outer		●			
500-1056-S E	Front skirt fixing plate set				●	
500-1057-S E	Front skirt fixing plate				●	
500-1058-S E	Front skirt locating plate inner				●	
500-1059-S E	Front skirt locating plate outer				●	
500-1100-S E	Body repair kit front			●		
500-1101-S E	Body repair kit side (set)			●		
500-1090-S E	Fan Housing				●	
500-1085-S E	Fan Impellor				●	
500-1095-S E	Rep. Plate fan housing			●		
500-1245-S EV	Impellor bolt				●	
222-2265	Tapelock ad. B. Wheel				●	
222-2295	Tapelock bush 16 15-42				●	
500-3006-S	Blast housing complete					●

● = Needs welding preparing

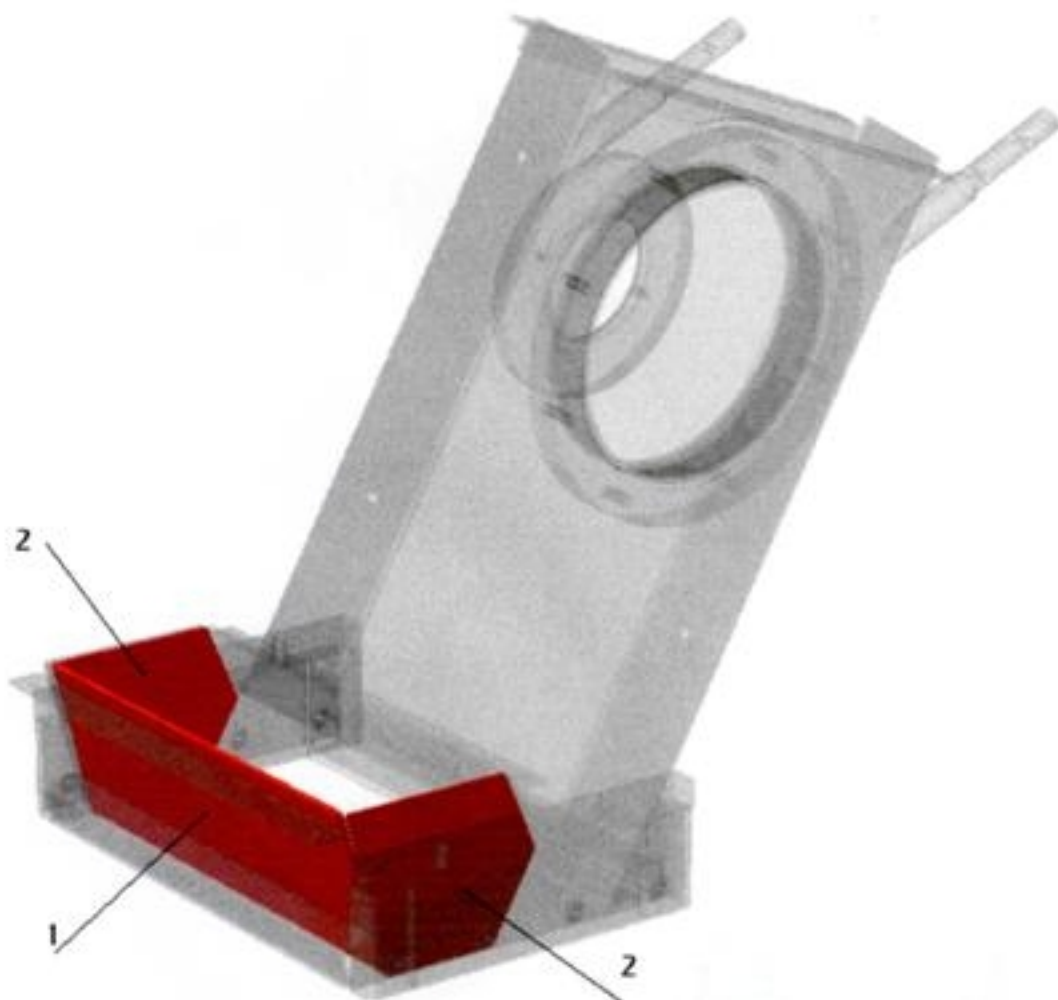
Note : Change Rotating of the Blastmotor after appr. 150 Hours.
(lifetime of wear parts will extend)

* Wear time indications are based by blasting normal steel surfaces with a epoxy coating of 400 Microns.

* The uses of steel shot and/or steel grit and hardness of rockwell can influence the life time of the wear parts.

EBE 500 S / E MACHINE						
Part Nr.	Description	0 - 20 h	20 - 80 h	80 - 200 h	200- 400 h	400- 800 h
500-1025-SE VH	Blastwheel					●
500-1106-SE	Blastwheel protector ring					●
500-1107-SE	Blastwheel protector plate					●
500-9007-SE VU	Blastwheel mount plate					●
500-1005	Blades (set of 6)		●			
500-1010	Impeller		●			
500-1015	Cage		●			
500-1030-SE	Liner Left				●	
500-1035-SE	Liner right				●	
500-1040	Top Liner				●	
500-1065-SE	Feedspout rubber			●		
500-1071-SE	Shot valve insert steel				●	
500-1070-SE	Shotvalve insert			●		
500-1045-SE	Back brush			●		
500-1060-SE	Side skirt (set 2)		●			
500-1050-SE	Side brush (set of 2)		●			
500-1020	Side Seal (set of 2)				●	
500-2035-SE	Side seal spring				●	
500-1021-SE	Side seal spring plate				●	

EBE 500 SE - Body Repair Plates



Pos.	Partnumber	Description	Qty
1	500-1100-SE	Body Repair Kit (front)	1
2	500-1101-SE	Body Repair Kit (side)	2

Common Wear parts EBE 350 serial 'horizontal / vertical machines'

Description		350 S	350 E	350 VH
Front skirt intermed		●	●	○
Front skirt outer		●	●	○
Mouthseal		○	○	●
Innerseal left		○	○	●
Innerseal right		○	○	●
Innerseal top		○	○	●
Innerseal bottom		○	○	●
Body repair kit front		●	●	○
Body repair kit side (set)		●	●	○
Fan Housing		●	●	○
Fan Impellor		●	●	○
Rep. Plate fan housing		●	●	○
Actuator		○	○	●
Blast motor belt		●	●	○
Side seal spring		●	●	○
Side seal spring plate		●	●	○
Taperlock ad. Bl. Wheel		●	●	●
Taperlock bush 1610 35		●	●	●
Bearing house complete		●	●	●
○	= Not Available parts			
●	= Standard Available parts			

Common Wear parts EBE 350 serial 'horizontal / vertical machines'**(Same part number)**

Description	350 S	350 E	350 VH
Blastwheel	●	●	●
Blastwheel protector ring	●	●	●
Blastwheel protector plate	●	●	●
Blades (set of 6)	●	●	●
Impellor	●	●	●
Cage	●	●	●
Liner Left	●	●	○
Liner right	●	●	○
Top Liner	●	●	●
Liner Left	○	○	●
Liner right	○	○	●
Top liner cover maganese	●	●	●
Feedspout rubber	●	●	○
Shotvalve insert	●	●	○
Back brush	●	●	○
Back brush skirt	●	●	○
Side skirt (set 2)	●	●	○
Side brush (set of 2)	●	●	○
Side Seal (set of 2)	●	●	○
Front skirt Inner	●	●	○

EBE 350 VH MACHINE

Part Nr.	Description	0 - 20 h	20 - 80 h	80 - 200 h	200- 400 h	400- 800 h
350-1245-SEV	Impeller bolt			●		
350-2431-VH	Blast motor belt (set of 3)				●	
350-2170-VH	Blast motor pulley (50 hz)					●
350-2182-VH	Blast motor pulley (60 Hz)					●
222-2265	Taperlock ad. Bl. Wheel				●	
222-2290	Taperlock bush 1610 35				●	
350-2451-SEV	Bearing house complete					●
350-9006-V	Blast housing complete					●
350-2485-VH	Bevator axxle set (set of 4)					●
350-2501-VH	Bevator belt ex. buckets				●	
350-2505-VH	Bevator bucket					●
350-2510-VH	Bobbin complete with shaft					●
350-9054-VH	Bevator drive roll					●
222-2242	Bevator Bearing FY 25 TR					●
222-2243	Bevator tension bearing Phuse 25					●
350-2213-VH	Drive motor chain left					●
350-2214-VH	Drive motor chain right					●
350-2215-VH	Bevator motor chain					●

Note : Change Rotating of the Blast motor after appr. 150 Hours.
(life time of wear parts will extend)

* Wear time indications are based by blasting normal steel surfaces with a epoxy coating of 400 Microns.

EBE 350 VH MACHINE

Part Nr.	Description	0 - 20 h	20 - 80 h	80 - 200 h	200- 400h	400- 800 h
350-1025-SEVH	Blastwheel					●
350-1106-SE	Blastwheel protector ring			●		
350-1107-SE	Blastwheel protector plate			●		
350-9007-SEVU	Blastwheel mount plate					●
350-1005	Blades (set of 6)			●		
350-1010	Impellor			●		
350-1015	Cage			●		
350-1030-VH	Liner Left			●		
350-1035-VH	Liner right			●		
350-1040	Top Liner			●		
350-1115-SEV	Top liner cover maganese			●		
350-1070-SE	Shotvalve insert			●		
350-1080-V	Mouthseal		●			
350-1077-V	Innerseal left	●				
350-1077-V	Innerseal right	●				
350-1073-V	Innerseal top	●				
350-1074-V	Innerseal bottom	●				
035-3191-VH	Abrasive valve actuator					●

EBE 350 II / E MACHINE

Part Nr.	Description	0 - 20 h	20 - 80 h	80 - 200 h	200-400 h	400-800 h
350-1052-SE	Front skirt inner	●				
350-1053-SE	Front skirt inner med		●			
350-1054-SE	Front skirt outer		●			
350-1057-SE	Front skirt fixing plate				●	
350-1058-SE	Front skirt locating plate inner				●	
350-1059-SE	Front skirt locating plate outer				●	
350-1100-SE	Body repair kit front			●		
350-1101-SE	Body repair kit side (set)			●		
350-1090-SE	Fan Housing				●	
350-1085-SE	Fan Impellor				●	
350-1095-SE	Rep. Plate fan housing			●		
350-1245-SEV	Impellor bolt			●		
350-2430-S	Blastmotor belt (set 2)				●	
350-2175	Blastmotor pulley (50 hz)					●
350-2345	Blastmotor pulley (60 Hz)					●
222-2265	Tapertock ad. B. Wheel				●	
222-2290	Tapertock bush 16 10 35				●	
350-2451-SEV	Bearing house complete					●
350-8006-S	Blasthousing complete					●

● = Needs welding preparing

Note : Change Rotating of the Blastmotor after appr. 150 Hours.
(life time of wear parts will extend)

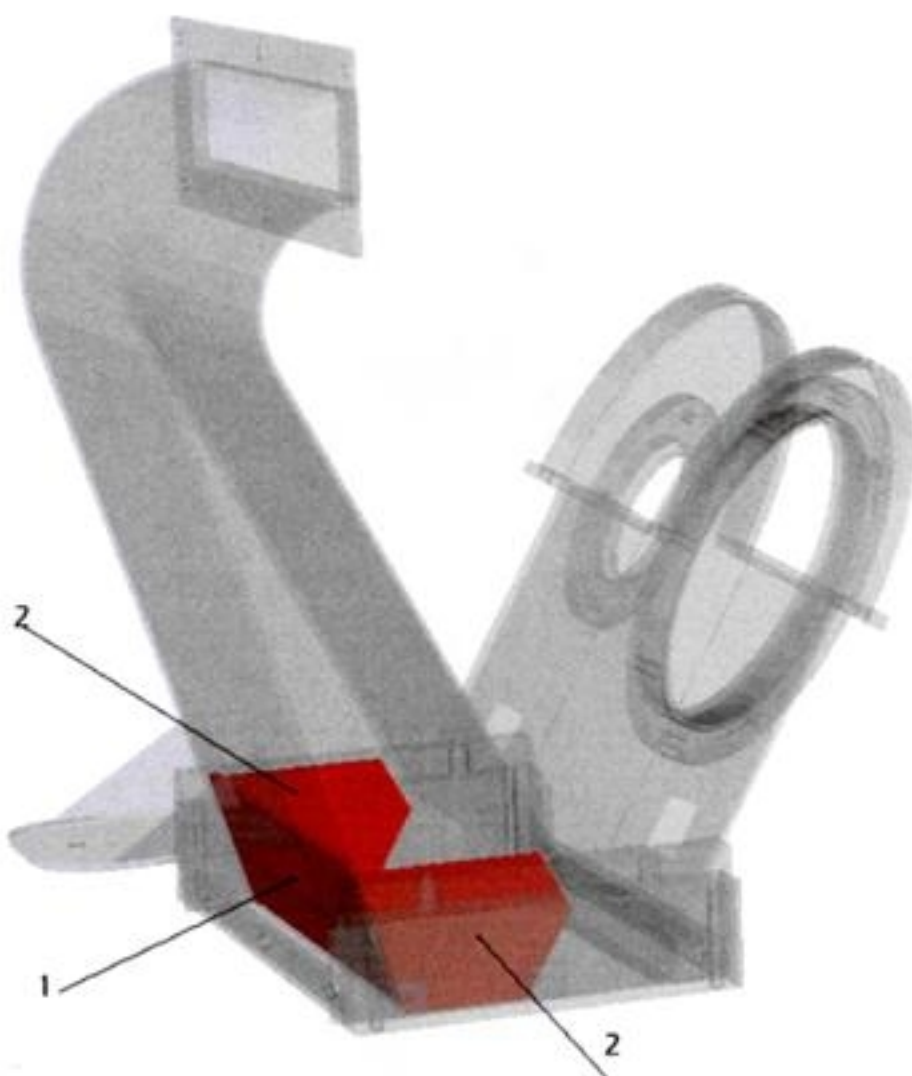
* Wear time indications are based by blasting normal steel surfaces with a epoxy coating of 400 Microns.

* The uses of steel shot and/or steel grit and hardness of rockwell can influence the life time of the wear parts.

EBE 350 S / E MACHINE

Part Nr.	Description	0 - 20 h	20 - 80 h	80 - 200 h	200 - 400 h	400 - 800 h
350-1025-SE VH	Blastwheel					●
350-1106-SE	Blastwheel protector ring			●		
350-1107-SE	Blastwheel protector plate			●		
350-9007-SE VU	Blastwheel mount plate					●
350-1005	Blades (set of 6)		●			
350-1010	Impeller		●			
350-1015	Cage		●			
350-1030-SE	Liner Left			●		
350-1035-SE	Liner right			●		
350-1040	Top Liner			●		
350-1115-SE V	Top liner cover manganese			●		
350-1065-SE	Feedspout rubber		●			
350-1071-SE	Shot valve insert steel				●	
350-1070-SE	Shot valve insert			●		
350-1045-SE	Back brush		●			
350-1047-SE	Back brush skirt		●			
350-1060-SE	Side skirt (set 2)		●			
350-1050-SE	Side brush (set of 2)		●			
350-1020	Side Seal (set of 2)				●	
350-2035-SE	Side seal spring			●		
350-1021-SE	Side seal spring plate			●		
350-2442-S	Drive wheel				●	

EBE 350 SE - Body Repair Plates



Pos	Partnumber	Description	Qty
1	350-1100-SE	Body Repair Kit (front)	1
2	350-1101-SE	Body Repair Plate (side)	2

EBE 350 II / E MACHINE

Part Nr.	Description	0 - 20 h	20 - 80 h	80 - 200 h	200-400 h	400-800 h
350-1052-SE	Front skirt inner	●				
350-1053-SE	Front skirt inner med		●			
350-1054-SE	Front skirt outer		●			
350-1057-SE	Front skirt fixing plate				●	
350-1058-SE	Front skirt locating plate inner				●	
350-1059-SE	Front skirt locating plate outer				●	
350-1100-SE	Body repair kit front			●		
350-1101-SE	Body repair kit side (set)			●		
350-1090_SE	Fan Housing				●	
350-1085-SE	Fan Impellor				●	
350-1095-SE	Rep. Plate fan housing			●		
350-1245-SEV	Impellor bolt			●		
350-2430-S	Blastmotor belt (set 2)				●	
350-2175	Blastmotor pulley (50 hz)					●
350-2345	Blastmotor pulley (60 Hz)					●
222-2265	Tapertock ad. B. Wheel				●	
222-2290	Tapertock bush 16 10 35				●	
350-2451-SEV	Bearing house complete					●
350-8006-S	Blasthousing complete					●

● = Needs welding preparing

Note : Change Rotating of the Blastmotor after appr. 150 Hours.
(life time of wear parts will extend)

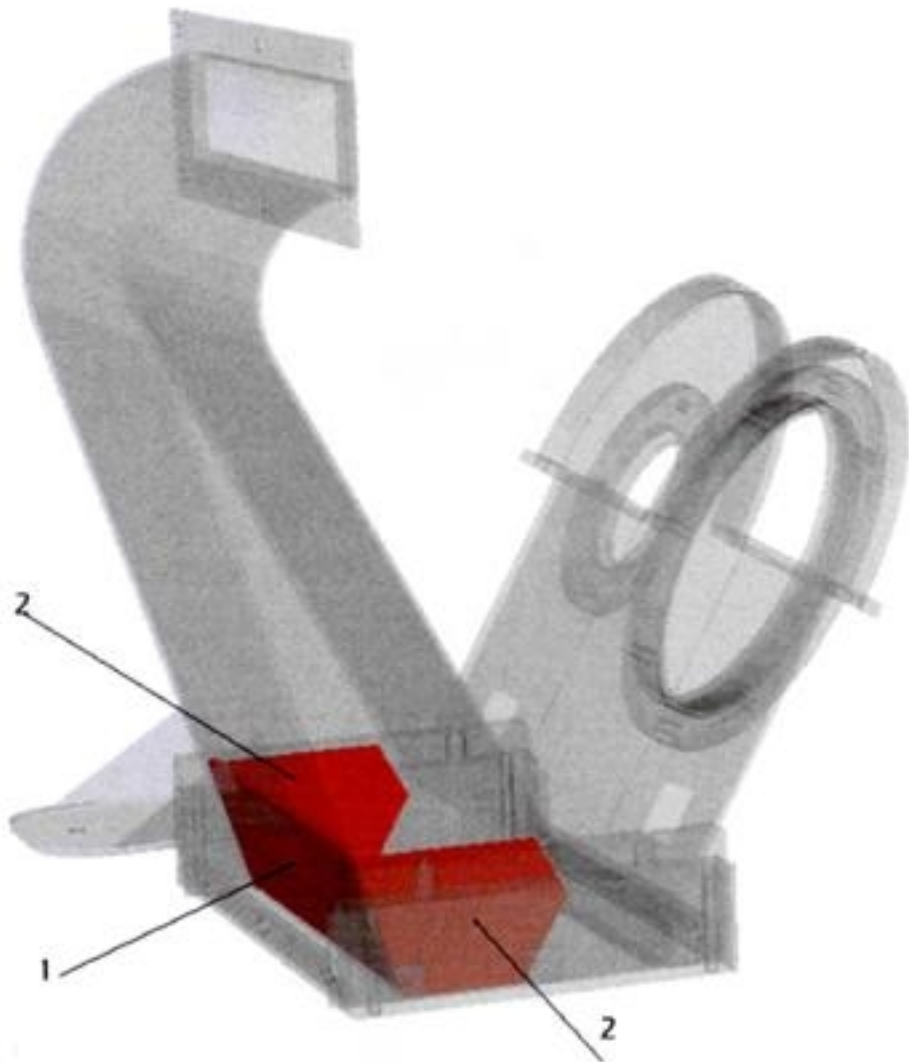
* Wear time indications are based by blasting normal steel surfaces with a epoxy coating of 400 Microns.

* The uses of steel shot and/or steel grit and hardness of rockwell can influence the life time of the wear parts.

EBE 350 S / E MACHINE

Part Nr.	Description	0 - 20 h	20 - 80 h	80 - 200 h	200 - 400 h	400 - 800 h
350-1025-SE VH	Blastwheel					●
350-1106-SE	Blastwheel protector ring			●		
350-1107-SE	Blastwheel protector plate			●		
350-9007-SE VU	Blastwheel mount plate					●
350-1005	Blades (set of 6)		●			
350-1010	Impeller		●			
350-1015	Cage		●			
350-1030-SE	Liner Left			●		
350-1035-SE	Liner right			●		
350-1040	Top Liner			●		
350-1115-SE V	Top liner cover manganese			●		
350-1065-SE	Feedspout rubber		●			
350-1071-SE	Shot valve insert steel				●	
350-1070-SE	Shot valve insert			●		
350-1045-SE	Back brush		●			
350-1047-SE	Back brush skirt		●			
350-1060-SE	Side skirt (set 2)		●			
350-1050-SE	Side brush (set of 2)		●			
350-1020	Side Seal (set of 2)				●	
350-2035-SE	Side seal spring			●		
350-1021-SE	Side seal spring plate			●		
350-2442-S	Drive wheel				●	

EBE 350 SE - Body Repair Plates



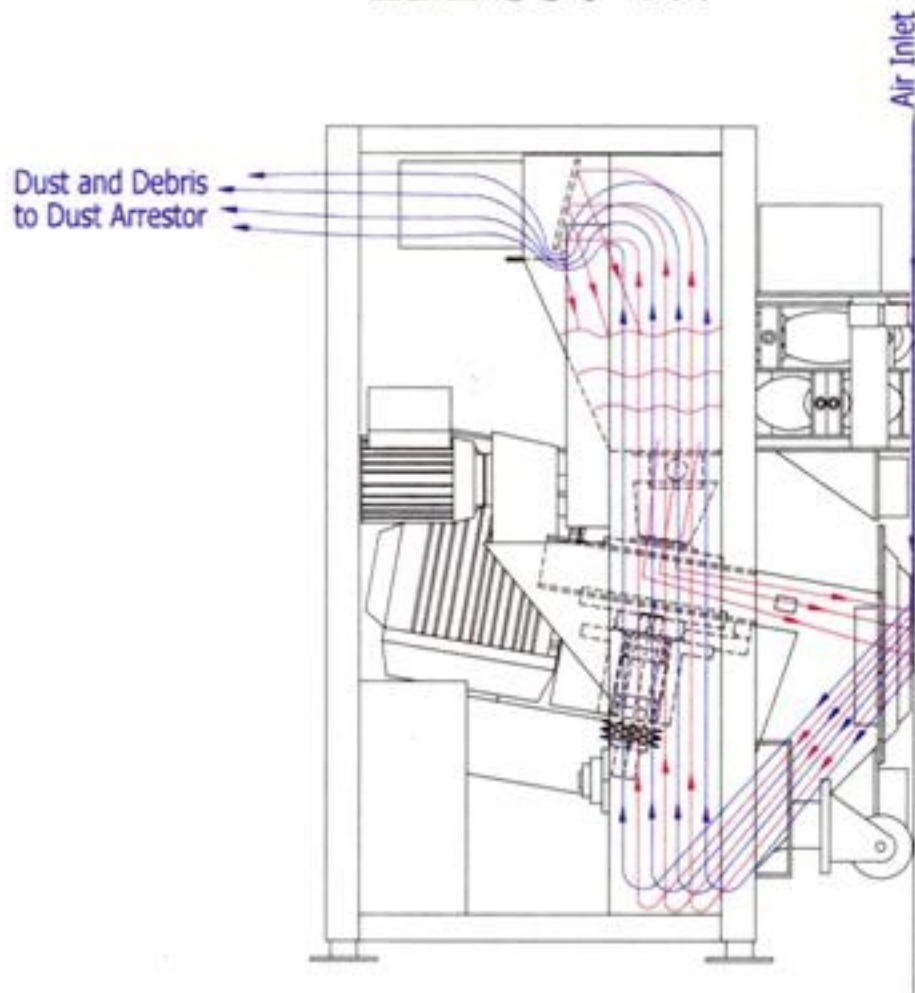
Pos.	Partnumber	Description	Qty
1	350-1100-SE	Body Repair Kit (front)	1
2	350-1101-SE	Body Repair Plate (side)	2

US
EBE

A/P - 16 February 2000

Working principal vertical

EBE 350 VH

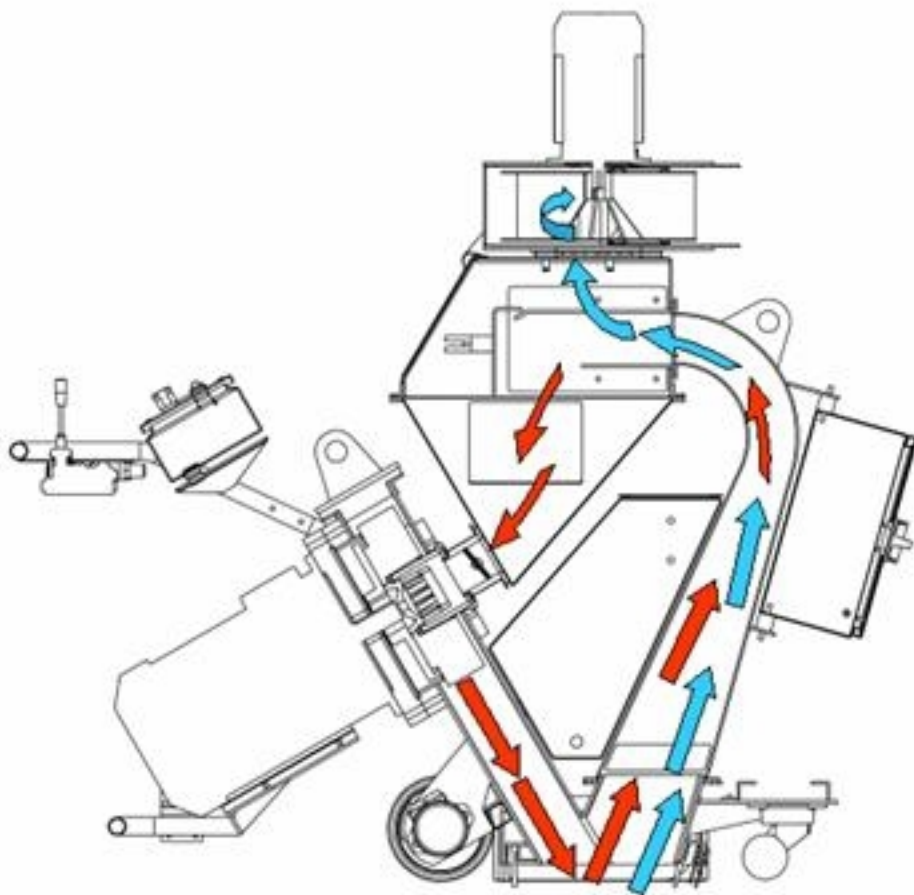


Abrasive and Airflow Paths

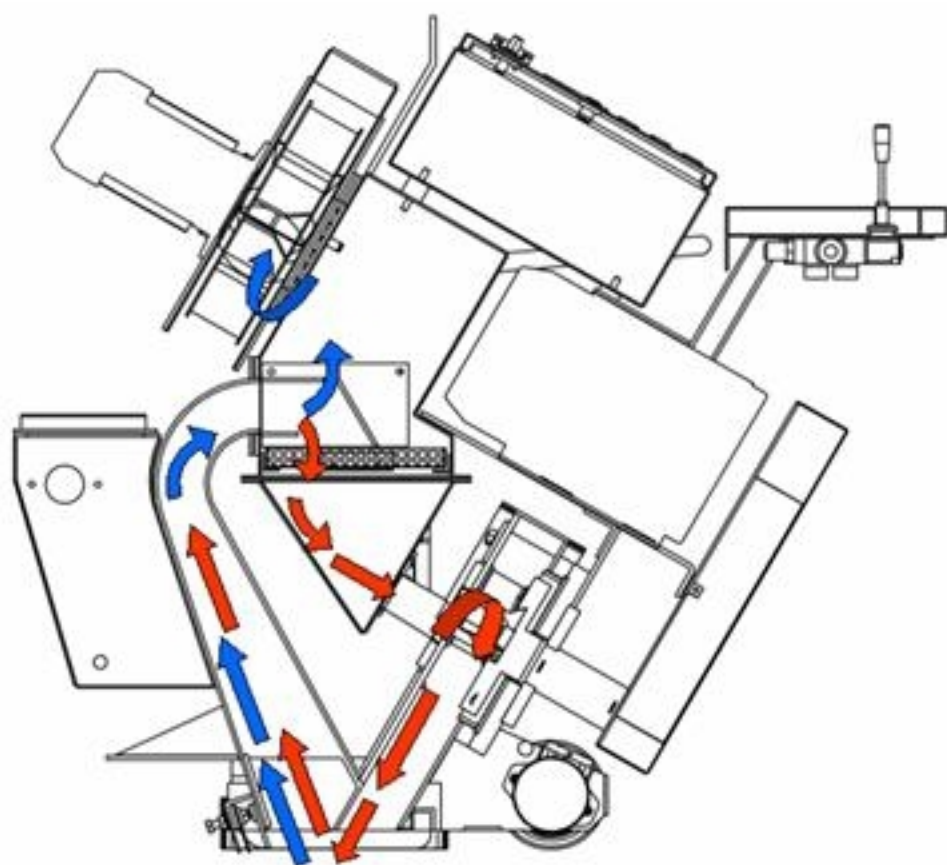
— Abrasive

— Airflow

Working principal horizontal



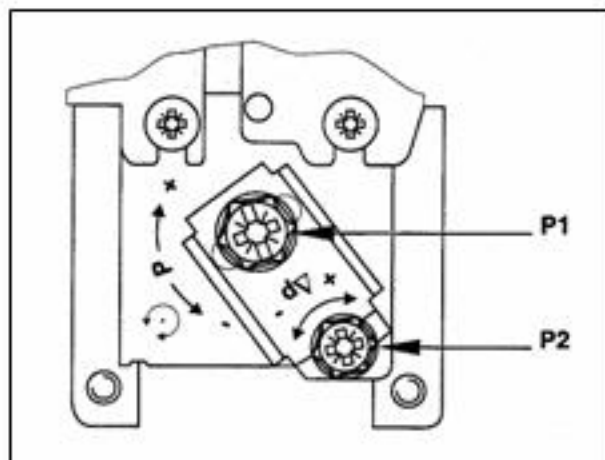
Working principal horizontal



WORKING PRINCIPLES

HORIZONTAL MACHINE

VERTICAL MACHINE



P 1 : To adjust the cut out pressure (7 bar)

To set up the pressure, please use screw driver .

- + to raise the pressure
- to lower the pressure

Be aware that the pressure may not exceed 7 bar

P2 : To adjust the switch on pressure (7 bar)

To set up the pressure, please use screw driver .

- + to raise the pressure
- to lower the pressure

Be aware that the difference between P1 and P2 must be 3.0 bar

Compressor is pre set at the USF Blastrac EBE factory, if compressor is in operation the compressor should run continuously, this to avoid overheating !!